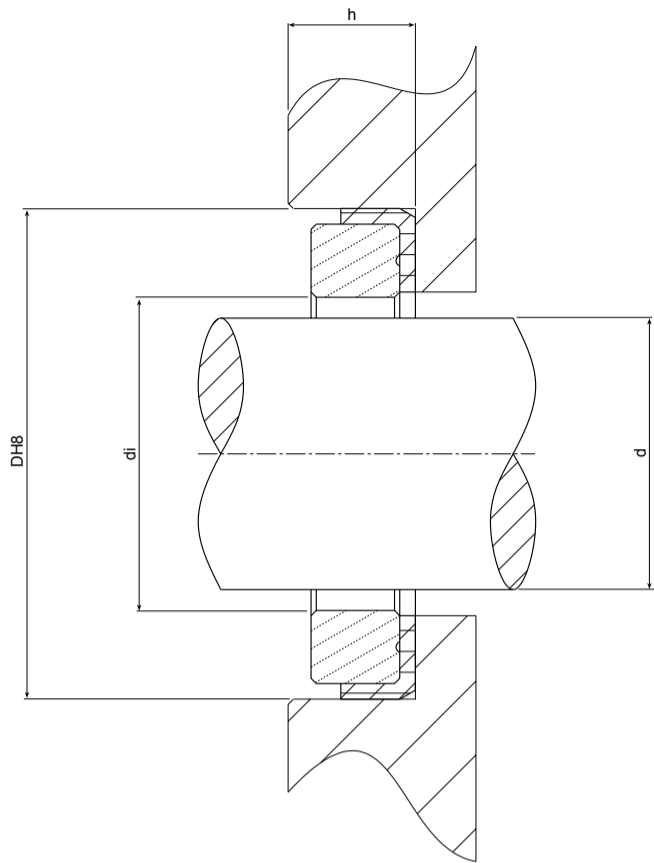


LE series



Operational limits - Standard components - DIN 24960	
P	4 bar
V	12 m/s
T	-35 +120°C

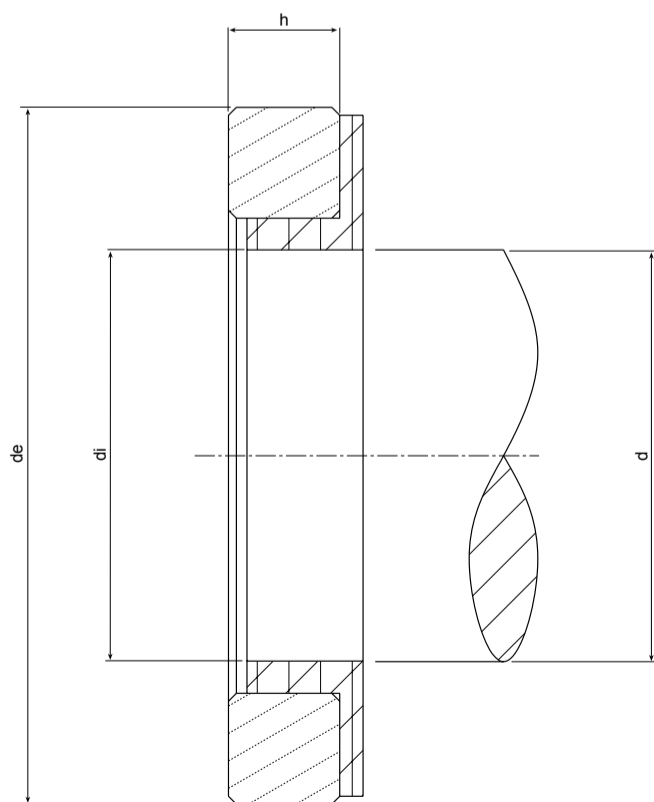
Counterface	V	-
Elastomeric parts	P	V



M - MTU code: initial installation - A - Alternative code: initial installation

Type	Description			d	di	DH8	H	M	A
LE-2	16,5	30	13,5	16	16,5	30÷30,033	13,5±0,2	4752545	4706879
LE-3	20,5	33,3	5,5	18	20,5	33,3÷33,8	5,5±0,2	-	311488
LE-4	21	40	13,5	20	21	40÷40,039	13,5±0,5	4757007	4710555
LE-5	26	45	10	25	26	45÷45,033	10±0,2	-	-
LE-6	27	50	10	25	27	50÷50,039	10±0,2	-	-
LE	17,5	29	5	16	17,5	29,2÷29,252	5±0,2	-	-

LI series



Operational limits - Standard components - DIN 24960	
P	4 bar
V	12 m/s
T	-35 +200°C

Counterface	V	Q
Elastomeric parts	P	P4



Type	Description			d	di	de	h
LI-1	15	29,5	5	14,987÷15,00	14,2	29,5	5±0,2
LI-2	16	29,5	5	15,90÷16,00	15,2	29,5	5±0,2
LI-3	21	35	5	20,97÷21,00	20,2	35	5±0,15