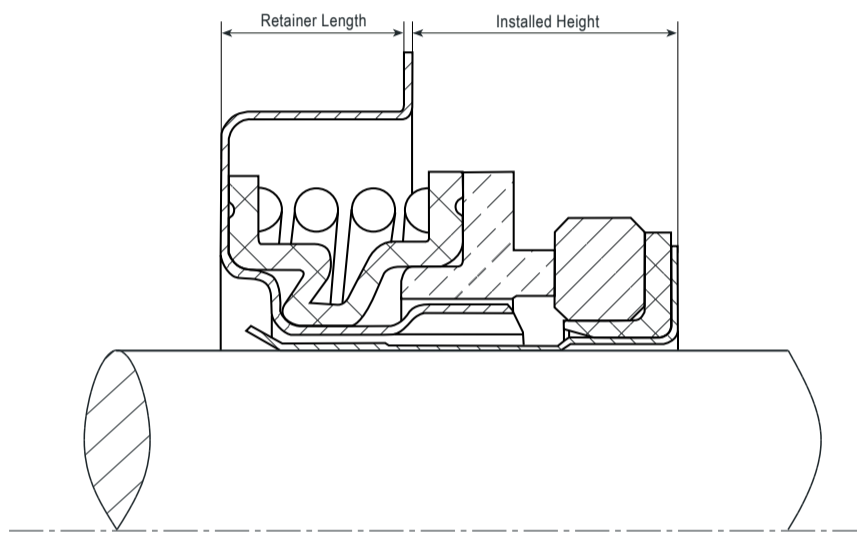
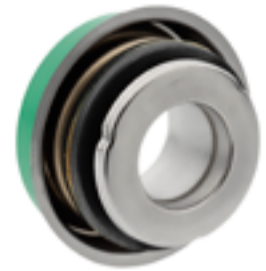


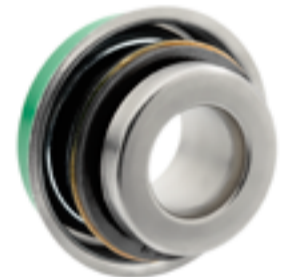
Type 6A



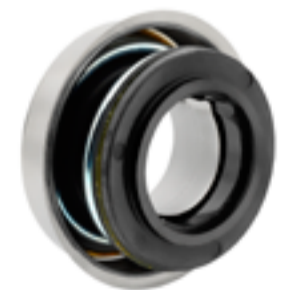
1



2



3



4



5

Operational limits - Standard components - DIN 24960

P	4 bar
V	10.000 rpm
T	-35 +150°C

Metal parts	F	-	-	-
Spring	F	F1	-	-
Elastomeric parts	P	P4	-	-
Primary Ring	B	C	-	-
Mating Ring	V	Q	-	-

M LINE

Size	retainer length	installed height
10x30	8,50	4,71
12x30	7,50	7,10
12,7x30	7,50	7,10
15x36,5	8,60	10,70
16x36,5	8,60	10,70

S LINE

Size	retainer length	installed height
12x30	7,05	8,13
16x36,5	8,60	10,80
16x38,1	8,60	10,80
16x39,4	8,60	10,80