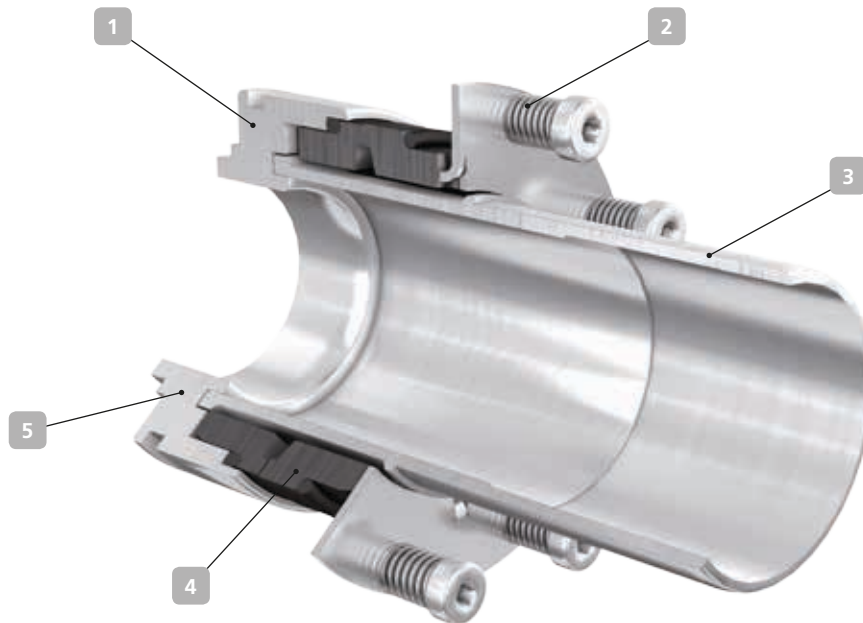


4KD – for KSB's KWP type series



Applications:
waste water containing stringy material and abrasive particles

1 Barrier fluid pressure

Mechanical seal especially designed for operation at barrier fluid pressure (in this case, a second, outboard seal is required).

2 Dependable

Stationary design, balanced, multiple springs located outside the fluid handled. The large springs are insensitive to contamination and provide uniform surface pressure across the seal faces, thus ensuring a long service life.

3 Robust

Tailored to the seal installation space of the pump, suitable for fluids with high solids content.

4 Safe

In the event of a sudden drop in the barrier fluid pressure, the double pressure balanced design ensures that 4KD's seal faces will not detach.

5 Compact

No adjusting dimensions necessary.

Technical description

Design	Double mechanical seal
Type	Stationary and balanced (inboard) Dynamic and unbalanced (outboard) Double pressure balanced
Springs	Multi-spring arrangement
Direction of rotation	Uni-directional
Additional information	The double mechanical seal comprises an inboard KSB seal (similar to the 4K type) and an outboard uni-directional single mechanical seal. Various wear part kits available, see ZN3302

Materials

Primary ring	SiC (Q1) / U as special variant
Mating ring	SiC (Q1) / U as special variant
Elastomers	EPDM (E) / FKM (V) / FFKM (K)
Springs	1.4571 (G) / 2.4610 (M)
Other Components	1.4462 (G1) / 1.4539 (G3)
Other material combinations on request	

Technical data

Barrier fluid pressure	8 to 16 bar, depending on size
Temperature	-20 °C to 120 °C
Bearing bracket (seal size)	P03ax (040), P04ax (050), P05ax (060), P06x (070), P08sx (080), P10ax (100), P12sx (120)
Business type	Standard (KSB EasySelect)