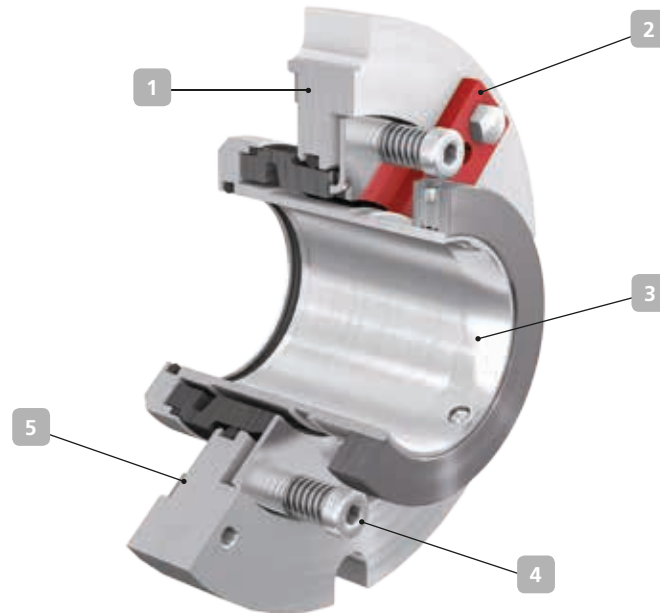


## 4CP – for KSB's MegaCPK / CPKN type series



**Applications:**  
chemical and petrochemical  
industries

### 1 Compact

Tailored to the cartridge installation space (DIN24960-C). Easy installation, no adjustments required when installing.

### 2 Service-friendly

Assembly fixtures ensure optimum pre-loading of the cartridge.

### 3 Versatile

For all operating conditions the pump is approved for.

### 4 Dependable

Stationary; the large springs with high axial mobility are located outside the fluid handled and thus insensitive to contamination.

### 5 Reliable

The mechanical seal cover is centred on the pump cover and confines the PTFE gasket.

#### Technical description

Design	Single cartridge seal
Type	Stationary, balanced
Springs	Multi-spring arrangement
Direction of rotation	Bi-directional

#### Materials

Primary ring	SiC (Q1)
Mating ring	SiC (Q1) / "B" carbon (B)
Elastomers	FKM (V) / EPDM (E) / FFKM (K) / FEP-encapsulated (M1)
Springs	1.4571 (G) / 2.4610 (M)
Other Components	1.4571 (G) / 1.4462 (G1) / 1.4501 (G4)

Other material combinations on request

#### Technical data

Operating pressure	Up to 25 bar, dynamic Up to 37.5 bar, static
Temperature	-20 °C to 150 °C
Bearing bracket (seal size)	P02/UP02/CS40 (033), P03/UP03/CS50 (043), P04/UP04/CS60 (053), P05/UP05/CS80 (065)
Business type	Engineered